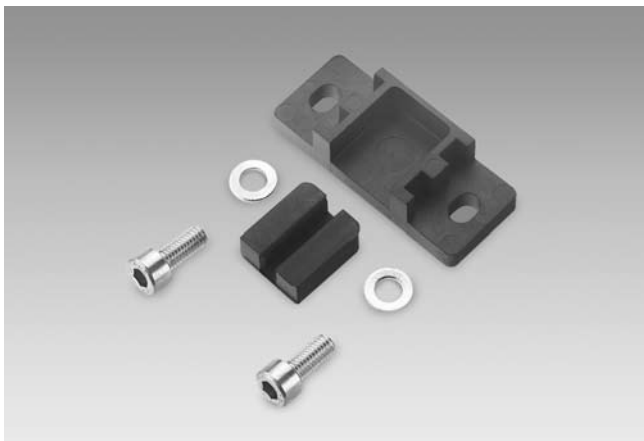


# Accessories

## Torque supports for hollow shaft encoders

Z 119.041



### Features

- Easy and cost-effective mounting
- For applications with high acceleration

### Mounting description

Push encoder onto drive shaft. Insert torque pin that is radially fixed at the encoder flange into the torque support (provided by customer).

### Part number

Z 119.041 Torque support by rubber buffer element for encoders with 15 mm pin

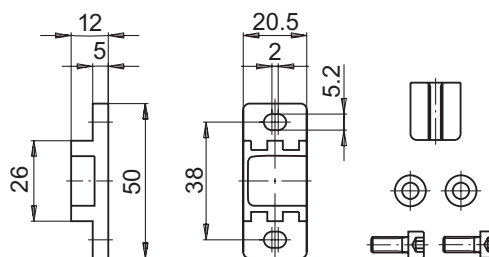
### Scope of delivery

Included: Torque support, rubber buffer, 2 screws M5 x 12 with two stay washers

### Suitable for

GI330, GI331, GI332, GI333,  
G0AMH, G0M2H, G0MMH, G0P5H, G1I0H, G1I0S, G1M2H,  
G2M2H, GBAMH, GBAMS, GBMMH, GBMMS, GBP5H,  
GCM2S, GCMMS, GXA2S, GXM2S, GXMMS, GXN1H,  
GXP1H, GXP5S, GXP6H, RXA1H

### Dimensions



### Dimension

